

## NEWSLETTER – April 2014



### Message from Chief Executive Pat Swell

Your artwork and achievements fill me with admiration.

- Circus artist Racheal Missingham who won our \$8,000 Rising Star bursary last year, a partnership with Arts Queensland, has returned from her research visit to Victoria, Canada and the UK – bringing experience of working with internationally acclaimed companies like Candoco (London) and Solar Bear Theatre (Glasgow) back to Queensland.
- A Rising Star bursary also helped Deb Chilton to start-up ArtISability, a great visual arts program she runs in Ipswich.
- And from 4 April – 18 May 2014 Peter Hughes, member of the Brisbane Outsider Artists' Studio, exhibits five of his paintings at the Casula Powerhouse in Sydney to complement the major exhibition of Carol Jerrems' black and white photographic work from the National Gallery of Australia. The exhibition is titled *The Soft Knife*.



Pat Swell, Chief Executive

**Date Claimer - Saturday 14 June 4pm, Windsor Hall - Access Arts' Community Showcase: *Catch A Dream!***

Another action-packed Access Arts celebration where members showcase their stunning achievements they accomplished throughout the first half of 2014. More inside!

**What's new?** Would you like to get involved with Access Arts in a different way? A new opportunity is opening up. We are looking for people to be involved in a Members Reference Group. This "ideas" forum will meet twice a year, advise us on what we might do and how we can make the activities that you want to happen, happen! Interested? Contact Georgia on [georgia@accessarts.org.au](mailto:georgia@accessarts.org.au) by the end of April 2014!

**Is film your passion?** Following our meeting with Screen Queensland on how we might work together to make film more accessible for artists with disability, if you are a film producer, writer, director or have an interest in film please contact Belinda by the end of April on [belinda@accessarts.org.au](mailto:belinda@accessarts.org.au) and we'll see how we might explore this avenue! See inside for details.

**Have your say on Arts Queensland's Blog. What do YOU think? Then tell them!** <http://www.arts.qld.gov.au/blog/index.php/inclusivity-for-queensland/>

**We've great business partners!** Our Christmas Fund-Raiser, a partnership with New Farm Rotary, raised \$1,483 towards our SAFE Grant fund. More recently we received a surprise \$100 contribution from Grill'd Camp Hill through their Local Matters campaign. KPMG have given us pro bono support, McCullough Robertson continue to exhibit our artists' artwork, New Horizons Learning Centre waived their training fee, and the Chamber of Commerce & Industry Queensland contributed a year's free membership due to generous nomination by their partner TwoCents. **Clearly Brisbane businesses believe in us!**

**To re-live** Access Arts' 30<sup>th</sup> Anniversary event highlights, click on [http://youtu.be/pV\\_XLZIkJnE](http://youtu.be/pV_XLZIkJnE)

**Enjoy this issue!**

## Message from President Thomas Bradley QC

Our AGM took place at the end of last month. It was wonderful to see the members who attended, and to know from the apologies that many of you were thinking of us on that day. It was an occasion when we reflected on the work of our organisation in 2013 and the impressive achievements of so many of you, our members.



**Thomas Bradley,**  
**President**

We remembered the highlights of the year, perhaps most particularly the 30<sup>th</sup> Anniversary celebration which brought back so many poignant memories of times past and set us on a strong path to go forward into the next 30 years.

We also considered the changes that the Board had proposed to the constitution which I outlined in our last Newsletter and were posted on the website. All these recommendations were agreed at the AGM, and so the revised constitution is available now on our website. You will also see our Annual Report and Audited Accounts for 2013 there too.

We sadly farewelled our Board Secretary **Linda Langley**, who found time to make a huge contribution to Access Arts through a tough and busy year. We greatly appreciate her contribution.

We also remembered our past Treasurer **Oddur Augustsson** who joined us in 2010 and stepped down at the end of 2013. Thanks to Oddur's careful guidance our annual budgets always came in on target. We thank him for his unflinching support over the years.

And we thanked **Sandy Gilliland** who stood down from the board in the middle of last year for health reasons. Sandy's experience and ideas from his own organisation, Australian Communication Exchange, made a tremendous contribution to the initial phase of our strategic plan.

The new Management Committee was elected. I was re-elected as President, Catherine Black as Treasurer and Susan Ball was voted Secretary; ordinary members James Cunningham and Sam Nicolosi were also re-elected.



**Robert Hoge, new Board Member**

New members have joined us. I want to introduce you to **Robert Hoge** (pictured above). Robert has worked as a journalist, a speechwriter, a science communicator for the CSIRO and a political advisor to the former Queensland Premier and Deputy Premier. He enjoys photography, and is interested in disability advocacy and social engagement. Also an author, Robert's memoir, *Ugly*, is about growing up ugly and disabled, as well as about counting the number of bad haircuts any one person can have!

I also want to mention **Patrice McKay** (pictured right). When the Board convened after the AGM we noticed a gap in business expertise that Linda Langley had previously contributed. I can now report that we have been extremely fortunate in persuading Patrice to join Access Arts' Board. Patrice brings a background in retail, the cemetery/ crematoria industry and mining services, and is a director of several private companies. Married with three children, she enjoys ballet, opera, music performance and the visual arts.



**Patrice McKay,  
New Board Member**

# Community Arts Program

## Term 2 Community Arts Workshops

### Visual Arts & Crafts (Explore Art Forms)

This fun workshop explores a range of artistic forms and techniques, from painting and printing, to collage and found-object sculpting. Join us for this term in developing your skills and confidence.

**Term 2:** Wednesday 23 April – Wednesday 11 June (8 weeks)

**Day/Time:** Wednesdays, 10:30am – 12:30pm

**Venue:** Access Arts Studio, SWARA – 101 Park Rd, Woolloongabba

**Cost:** \$75 per term, to be paid to Access Arts office or in Week 1

**Facilitator:** Artist, Felicity Kelly-Cruise

**Support Worker:** Saskia Levy

### New Visual Arts (Extend Your Skills)

We have an exciting new workshop! Come and build on skills you already have or learn something new. This is a workshop designed to offer our members an opportunity to focus developing their skills and techniques in a particular visual art form, from painting or drawing to sculpting or printing. It's up to you!

**Term 2:** Thursday 24 April – Thursday 12 June (8 weeks)

**Day/Time:** Thursdays, 10am – 12pm

**Venue:** Access Arts Studio, SWARA – 101 Park Rd, Woolloongabba

**Cost:** \$75 per term, to be paid to Access Arts office or in Week 1

**Facilitator:** Artist, Felicity Kelly-Cruise

**Support Worker:** Sally Elliott

## **Singing Workshop**

Continuing on from Term 1, participants will be taught vocal techniques and will explore different, fun ways of creating harmony. The workshop will be working towards a final performance at our mid-year Community Showcase. No experience needed, all are welcome!

**Term 2:** Thursday 24 April – Thursday 12 June (8 weeks)

**Day/Time:** Thursdays, 12:30pm – 2:00pm

**Venue:** New Farm Neighbourhood Centre, 967 Brunswick St, New Farm

**Cost:** \$75 per term, to be paid to Access Arts office or in Week 1

**Facilitator:** Artist, Annie Peterson

**Support Worker:** Natalie Lazaroo



**Singing Workshop last term**

## Drumming Workshop

Participants will learn different skills and techniques on various drums and percussion instruments, exploring a range of rhythms and musical patterns. No experience required – all are welcome in the Drumming Circle!

**Term 2:** Friday 2 May – Friday 13 June (7 weeks)

**Day/Time:** Fridays, 11am – 1pm

**Venue:** SWARA – 101 Park Rd, Woolloongabba

**Cost:** Free

**Facilitator:** Drummer and percussionist, Nicky Perry

**Support Worker:** Clare Lake



**Drumming Workshop last term**

For further information on the Community Arts Program, please contact Georgia Smith, Arts Administrator, on (07) 3254 9585 or [georgia@accessarts.org.au](mailto:georgia@accessarts.org.au).

## Dates for the Diary

*Community Showcase*

Saturday, 14 June

*Term 3 Community Arts Workshop program*

14 July – 13 September

### **Community Showcase – *Catch A Dream!***

This year's Community Showcase is themed *Catch A Dream!* and is shaping up to be a great event. Keep an eye out for more details in our next newsletter and on our website.

**Can you volunteer to help?** To ensure the event runs smoothly, we are looking for people to assist us to:

- Set up the event
- Direct people to the event hall
- Staff the "Welcome Desk"
- Back stage operations
- Event pack-up

If you are interested and want to take part we would love to hear from you! Please contact Harmonie or Georgia at the office to register your interest.



# Visual Arts Professional Development

## Visual Arts Workshops

### Brisbane Outsider Artists' Studio (BOA)

BOA is a studio for artists who want to develop their visual arts skills to a professional standard. Before attending the BOA studio in Brisbane, members are requested to make an appointment with Access Arts to present and discuss their arts practice. The BOA studio is open two days per week. Artists receive professional development support, high quality materials and opportunities to exhibit in quality exhibitions.

**Term 2:** Monday 21 April - Tuesday 10 June (8 weeks)\*

**Term 3:** Monday 14 July – Tuesday 2 September (8 weeks)

**Term 4:** Monday 6 October – Tuesday 25 November (8 weeks)

**Day/Time:** Mondays and Tuesdays, 10am – 3pm

**Venue:** Access Arts Studio, SWARA, 101 Park Rd, Woolloongabba

**Cost:** \$120 per term, to be paid to Access Arts office

**Facilitator:** Rachel Gaffney-Dawson

**\*Please note BOA is full for Term 2**

### Camera Wonderers

The Access Arts Camera Wonderers are a group of dedicated photographers that meet once a week to discuss photography, techniques and ideas. The Camera Wonderers critique and encourage each other's developing photographic practice in a supportive, non-competitive environment. Throughout the year the Camera Wonderers showcase their work in a range of exhibitions.

**Term 2:** Tuesday 29 April – Tuesday 17 June (8 weeks)

**Term 3:** Tuesday 15 July – Tuesday 2 September (8 weeks)

**Term 4:** Tuesday 7 October – Tuesday 25 November (8 weeks)

**Day/Time:** Tuesdays, 11am – 12:30pm

**Venue:** Access Arts office, 1F/24 Macquarie St, Teneriffe

**Cost:** \$75 per term, to be paid to Access Arts office

**Facilitator:** Louis Lim

For more information on the Visual Arts Program contact Rachel Gaffney-Dawson on (07) 3254 9585 or [rachel@accessarts.org.au](mailto:rachel@accessarts.org.au).

## Current Exhibitions

**Peter Hughes exhibits in *The Soft Knife*, Casula Powerhouse Sydney**

Peter Hughes, member of the Brisbane Outsider Artists' Studio, has been asked to exhibit five paintings at the Casula Powerhouse in Sydney as part of *The Soft Knife* exhibition. Peter's work will complement a major exhibition of Carol Jerrems black and white photographic work from the National Gallery of Australia. Congratulations Peter!

**When:** Friday 4 April – Sunday 18 May 2014

**Where:** Casula Powerhouse Arts Centre, 1 Casula Powerhouse Road, Casula (Sydney)

**Opening Hours:** 10am – 5pm daily



**My Mummy Pray to Mary Jane – painting by Peter Hughes**

## Peter Hughes exhibits in *Spectrum*



**Medina on Anti-bullying – painting  
by Peter Hughes**

Peter Hughes has been selected to exhibit ten of his artworks in the upcoming Art from the Margins group exhibition *Spectrum*. Peter's featured artwork will address a broad range of subject matter such as bullying, natural disasters and family dynamics.

**When:** Friday 24 April - Tuesday 24 June 2014

**Where:** St Andrew's War Memorial Hospital, Level 1, 457 Wickham Terrace, Spring Hill

**Opening Hours:** Open daily 8am-8pm

## Dion Halse and Cybele Borel de Bitche exhibit at McCullough Robertson

Congratulations to Dion Halse and Cybele Borel de Bitche whose artworks have recently been selected for the rotating McCullough Robertson foyer display. Three of Dion's detailed black and white drawings depicting quirky houses and Japanese inspired gardens were on display from January through to March. Three of Cybele's acrylic paintings of baby's faces in blue shades will be on display from March through to June. Cybele has used a limited colour palette and deliberate brush strokes to skilfully capture a range of facial expressions and emotions through this series of work.



**Artwork by Dion Halse exhibited at McCullough Robertson**



**Artwork by Cybele Borel de Bitche exhibited at McCullough**

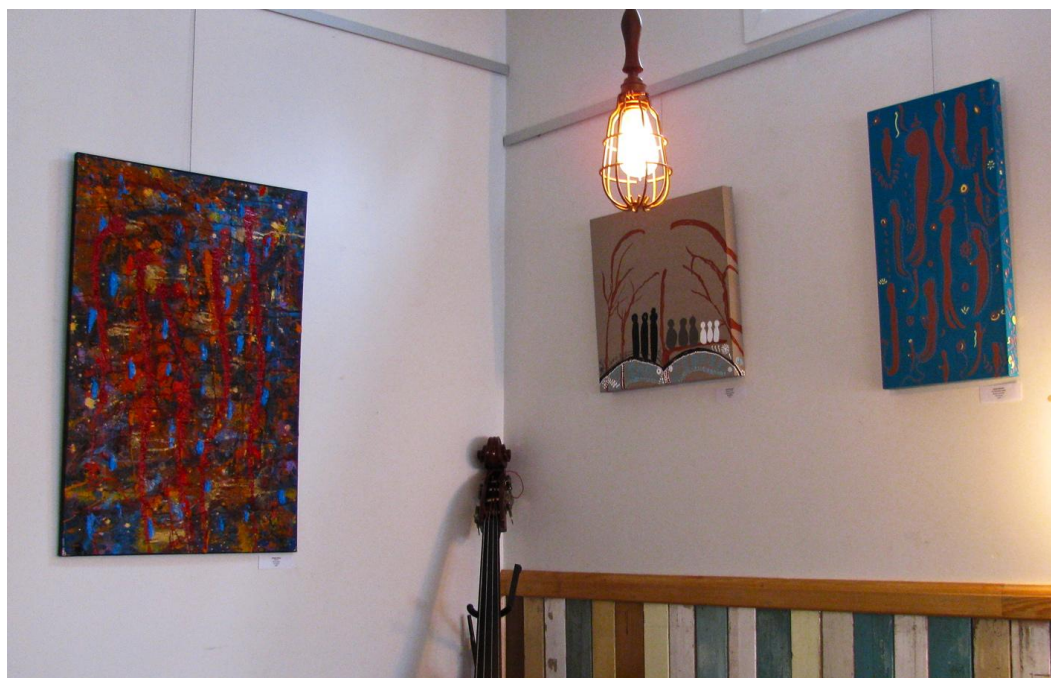
## **Tanya Darl, Carmel Drennan and George Delaney exhibit at Bass Espresso Café**

Congratulations to Brisbane Outsider Artists Tanya Darl, Carmel Drennan and George Delaney who currently have a selection of their works on display at Bass Espresso Café in West End. Tanya's artworks highlight her recent explorations with a range of new mediums including coffee, vinegar, leaves, paper cut outs and resin. Her artworks appeal to the senses with a coffee/vinegar aroma, earthy colour palette and varied textures. George's expressive and layered application of oil paints suggest the colourful, explosive quality of fireworks. His artworks were inspired by the annual Brisbane Riverfire celebrations. Carmel's artworks communicate her reflective, considered approach to art making with subtle colours and delicately formed, semi-abstract elegant figures. Through her creative practice Carmel explores her cultural roots.

**When:** Monday 24 March - Monday 21 April 2014

**Where:** Bass Espresso Café, 245 Boundary St West End, Brisbane

**Opening hours:** 7am – 1pm (Monday – Friday), 8am – 3:30pm (Saturday and Sunday)



**Exhibition at Bass Espresso Café in West End**

## Alex Crombie Van-Ewyk's 6th Solo Exhibition: *Ghouls in the Gardens*



Artwork by Alex Crombie

This exhibition reflects Alex's interest in the 'dark side' (monsters, ghouls, myths, the occult), with her beloved Manga characters depicted as ghoulish statues (gargoyles) in the gardens at night. Many new ceramic creations, such as Bat Plates, and Mosaics will also be on display.

**When:** Friday 23 – Sunday 25 May 2014

**Where:** Richard Randal Art Studio, Brisbane Botanic Gardens Mt Coot-tha

**Opening Hours:** 5pm – 8pm (Friday, Opening Night), 10am – 5pm (Saturday and Sunday)

## Matt Rees to exhibit *Dreamscape* at Vera Wade Gallery and Caboolture Regional Art Gallery



*Stone Biology 2* by Matt Rees

Congratulations to Access Arts member Matt Rees whose solo exhibition *Dreamscape* will be shown in two locations this year: Vera Wade Gallery in Brisbane City, and Caboolture Regional Art Gallery. Matt undertook a visual arts mentorship with Silvia Herranz-Gonzalez in 2013 which has culminated in this fantastic result. *Dreamscape* will explore science fiction themes and will feature a range of paintings, drawings and animation. Exhibition dates coming soon.

## Term 1 Gallery Visit

This term members of the Brisbane Outsider Artists' Studio went to the Queensland Art Gallery and the Gallery of Modern Art to gain inspiration for their own creative practices. The primary exhibition on display was titled *Falling Back to Earth*; a large scale series of four dramatic installations by one of the world's leading artists, Cai Guo-Qiang. The members also viewed a range of smaller exhibitions including *Voice and Reason*, *Seen and Heard*, *Ring of Stones* and *Transparent: Watercolour in Queensland 1850s – 1980s*. It was a great day!



Members of Brisbane Outsider Artists' Studio at GoMA

## ***Body Image Story***

Pictured below are some of the torsos that appear in a book published in April celebrating the *Body Image Story*, a visual arts project by ten brave Indigenous women, many from the Stolen Generation. The project was led by talented Indigenous artist Jannette Evans. As a result of this partnership between Access Arts and the Healing Centre Aboriginal and Torres Strait Islander Centre Health Service, two of the women are now interested in studying a further education course at art college and a second visual arts project is underway. We are grateful to Australian Government's Office of Aboriginal and Torres Strait Islander Health, and the Office of the Prime Minister and Cabinet, for funding that has made these projects possible.



**Torsos created as part of the *Body Image Story* project**



## How it all began for Racheal Missingham...



**Racheal Missingham**

“I am a Deaf female emerging circus artist whom has been training in circus arts skills, including aerial and acrobatic skills since 2011 with Vulcana Women’s Circus. Prior to training and performing in circus arts, I did not dream about being a professional performing artist as I grew up with perceived ideas that a deaf person could not be an artist of any kind. A few years ago, I was looking for a challenge and my partner suggested that I go to the Deaf Women’s Circus Group that was being run by Vulcana Women’s Circus...”

And that’s how Racheal started on her quest to grow as a professional artist back in 2011. In 2013 Racheal took part in Access Arts’ *Rising Star* program, a partnership with Arts Queensland, won the \$8,000 Rising Star bursary award and in 2013/14 travelled to extend her experience in circus arts to Victoria, Canada and the UK. Racheal is also working tirelessly to establish Deaf Arts Queensland, so that all deaf and hard of hearing Queenslanders can access the arts.

## Calling All Filmmakers!

Are you interested in writing, directing or producing for film or TV? We want to hear from you!

Project Coordinator Belinda Locke is looking at ways we can best support our members who have a passion for working in film or TV.

Maybe you would like to improve your screenwriting skills, or undertake an internship with Screen Queensland to learn about running film events.

Contact Belinda on [belinda@accessarts.org.au](mailto:belinda@accessarts.org.au) or call (07) 3254 9585.

## **THE BEATLES – PHENOMENAL SUCCESS AS A BAND**

Poem written by Access Arts member, Bill Thomas (Nov, 2013)

The genius success of 'The Beatles' is a combination of the multi-talented singing and songwriting and musicianship of the four band members Paul McCartney, John Lennon, George Harrison and Ringo Starr,

With numerous hit singles and hit albums from 1962 to 1970 their success took them all very far.

Accumulating such famous songs as 'Love Me Do' - 'She Loves You' - 'I Want To Hold Your Hand' 'Yesterday' - 'Norwegian Wood' - 'Nowhere Man' - 'In My Life' - 'I Am The Walrus' - 'Hey Jude' - 'Revolution' - 'I'm Down' - 'Here Comes The Sun' - 'Don't let me Down' - 'Let it Be' - 'Come Together' - 'Julia' - 'Something' - 'Drive My Car' - 'While My Guitar Gently Weeps' - 'You Won't See Me' and 'The Long And Winding Road',

Which in just under 8 years was a colossal, amazing workload.

Some of 'The Beatles' albums are 'Please Please Me' - 'With The Beatles' - 'Beatles For Sale' - 'Revolver' - 'Rubber Soul' - 'The White Album' - 'Hey Jude' - 'Let It Be' - 'Abbey Road' and 'Sergeant Pepper's Lonely Hearts Club Band',

And with such incredible, clever, unique, original, intelligent, interesting, memorable recordings their success is easy to understand.



***Abbey Road* album cover by The Beatles**

## **ACCESS ARTS TEAM**

Pat Swell: Chief Executive  
Rachel Gaffney-Dawson: Visual Arts Coordinator  
Belinda Locke: Project Coordinator  
Georgia Smith: Arts Administrator  
Jan Spinks: Finance Officer  
Harmonie Downes: Administrative Assistant

## **FEEDBACK**

*Access Arts welcomes your feedback at any time on our events, workshops, newsletters, website or anything else.*

*All of Access Arts' policies and procedures are available on our website:*

**[www.accessarts.org.au/index.php/about-us/quality-assurance](http://www.accessarts.org.au/index.php/about-us/quality-assurance)**



### **Access Arts Inc. (Queensland)**

Street Address: Access Arts Inc. 1F/24 Macquarie Street, Teneriffe QLD 4005

Phone: + (61 7) 3254 9585

Local Call Cost: 1300 663 651 (for regional callers)

Web: [www.accessarts.org.au](http://www.accessarts.org.au)

Email: [info@accessarts.org.au](mailto:info@accessarts.org.au)

ABN: 82 066 160 761

**OFFICE OPENING HOURS: 9:00am – 5:00pm Monday – Thursday**

## Sponsorship opportunities at Access Arts



At Access Arts we are passionate about making sure that the creative ideas of people with disability become a reality. Would your business like to make a difference through philanthropic support, corporate partnership or sponsorship? Would you like to give benefits back to society that helped you to prosper?

There are many ways that your company can help Access Arts support the creativity of people with disability. Our Chief Executive, Pat Swell, would be delighted to discuss ways that, together, we can make access to the arts for everyone in Queensland a reality. Email Pat at [pat@accessarts.org.au](mailto:pat@accessarts.org.au).

## Donations

When you make a donation you play a vital role in the cultural landscape of our State and of our people. And each donation over \$2.00 is tax deductible.

### You could

- **Support an artist**, by contributing to the SAFE Fund. Queensland artists with disability have developed their personal insight into the creative process and grown in confidence through Access Arts' fast flexible SAFE grant scheme
- **Help realise our next artistic project** – by funding a place on a workshop or master-class, backing a showcase or festival event – and through giving people the fun of making art together you bring happiness and joy
- **Keep our technology sharp!** In this digitally creative age and as we settle into our new premises it would be so good to have those essential items that transform lives in our community.

### Can you support us and make a difference?

*To receive tax deductible status for donations over \$2, just give us your name and address when making your donation and we will email a tax receipt to you.*

### Facebook / Twitter



Don't want to miss a thing? Like us on Facebook [www.facebook.com/accessartsqld](http://www.facebook.com/accessartsqld) and follow us on Twitter [@aaqld](https://twitter.com/aaqld) for all our latest news, links to opportunities and exhibitions, and photos of our events